



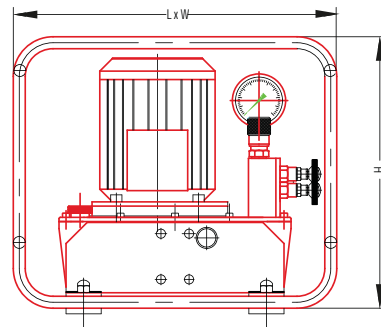
EHP.8.F.4.1500 with magneto-thermal switch

Specifications

- 1.1 kW three-phase 230/380V - 50 Hz electric motor
- Pressure 1500 bar in continuous operation
- Constant flow rate 0.4 L/min
- Effective oil tank capacity 4 litres
- Factory-calibrated safety pressure limiter
- Easy-adjustment fine interval pressure limiter
- Pressure gauge diameter 63
- ¼ BSP outlet oil connector (sealing on cone)
- Tubular protective chassis

On request

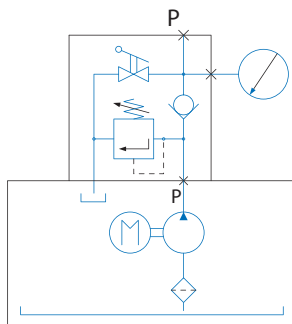
- 1.1 kW – 230V – 50Hz single-phase electric motor
- Quick couplers with protective caps
- Effective tank capacity 10 litres
- Specific distribution
- Magneto-thermal switch



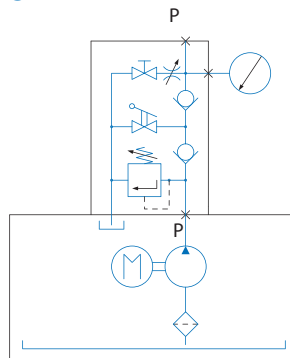
Versions*

- EHP.8.U : Single-acting cylinder control with no load holding
- EHP.8.F : Single-acting cylinder control with load holding and braking valve
- EHP.8.D : Double-acting cylinder control with integrated indexed manual control valve

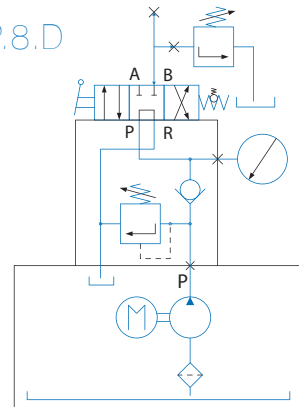
EHP.8.U



EHP.8.F



EHP.8.D



| Type | Power in kW | Working pressure in bar | Flow rates l/min | | Oil capacity in litres | Size (dimensions in mm) | | | Mass in Kg |
|--------------|-------------|-------------------------|------------------|---------|------------------------|-------------------------|-------|--------|------------|
| | | | Approach (100 b) | Working | | Length | Width | Height | |
| E.8.*.4.1500 | 0,75 | 1500 | | 0,4 | 4 | 460 | 357 | 353 | 46 |