

Thrust - Traction in all positions - Capacity of 35 to 330 tonnes



Description

Cylinders recommended for heavy work. Double-acting, working in push and pull mode, they are equipped with hydraulic piston return (speedy operation) while retaining the benefit of the safety nut in the event of long-term load holding.

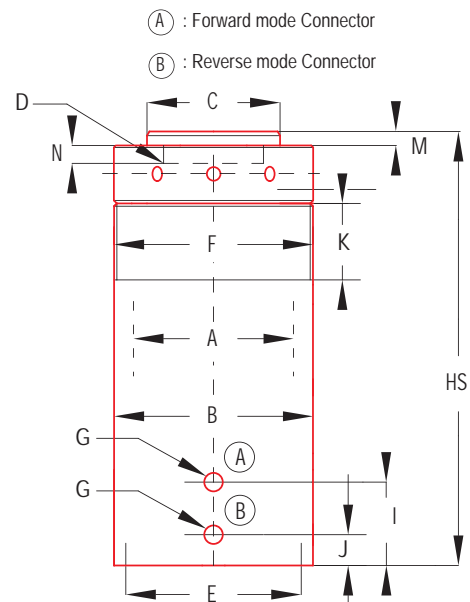
These cylinders are equipped with a safety valve on the return to prevent accidental pressure surges.

Specifications

- Capacity 35 to 330 tonnes
- Stroke 100 to 220 mm
- Threaded piston with safety nut
- Hydraulic piston return
- Anti-seizing, corrosion-proof treatment
- Guide and full load stop ring
- Threaded and detachable thrust head made of treated steel
- Safety valve on reverse mode to prevent any accidental pressure surge
- Inverted screw-on 1/2 couplers 3000-3, for keying purposes

On request

- Different thrusts and strokes
- Rear-threaded clamping holes
- Threaded cylinder neck
- Tilting piston head



Cat Tonnes	Forces KN		Cross-section cm ²		Stroke mm	Oil volume dm ³	P/N	Mass kg	Dimensions in mm												
	Push	Pull	push	Pull					HS	A	B	C	D	E	F	G	I	J	K	M	N
35	348	37	49,7	12,56	100	0,497	DE.35.100.S	19,6	280	85	113	75	M55 X2	4M10 depth 12 on Ø 95	M113 X2	3/8 NPT	62	22	40	10	10
					160	0,795	DE.35.160.S	23	340												
					220	1,093	DE.35.220.S	26,7	400												
55	556	37	79,5	12,56	100	0,795	DE.55.100.S	33,3	295	105	142	93	M55 X2	4M10 depth 12 on Ø 115	M142 X3	3/8 NPT	62	22	45	10	10
					160	1,273	DE.55.160.S	39,3	355												
					220	1,749	DE.55.220.S	45,3	415												
75	742	37	106	12,56	100	1,06	DE.75.100.S	42,9	305	120	159	107	M55 X2	4M12 depth 14 on Ø 130	M159 X3	3/8 NPT	62	22	55	12	10
					160	1,7	DE.75.160.S	50,6	365												
					220	2,332	DE.75.220.S	59	430												
115	1148	77	164,14	25,92	100	1,641	DE.115.100.S	70,5	321	150	199	135	M74 X2	4M14 depth 14 on Ø 170	M199 X3	3/8 NPT	67	22	60	14	12
					160	2,626	DE.115.160.S	82,4	381												
					220	3,611	DE.115.220.S	96,4	451												
150	1501	113	214,44	37,7	100	2,145	DE.150.100.S	93	330	170	226	152	M84 X2	4M16 depth 18 on Ø 190	M226 X3	3/8 NPT	67	22	70	15	15
					160	3,431	DE.150.160.S	108	390												
					220	4,717	DE.150.220.S	125,8	460												
200	2001	150	285,88	50,27	100	2,86	DE.200.100.S	140,7	360	200	268	172	M112 X3	4M16 depth 18 on Ø 220	M268 X3	3/8 NPT	72	22	70	20	15
					160	4,58	DE.200.160.S	160,9	420												
					220	6,29	DE.200.220.S	181,1	480												
330	3238	226	462,63	75,63	100	4,627	DE.330.100.S	245,3	402	250	332	224	M128 X3	4M16 depth 18 on Ø 270	M332 X4	3/8 NPT	72	22	85	22	18
					160	7,402	DE.330.160.S	278	462												
					220	10,178	DE.330.220.S	310	522												

Note: Cylinders with different forces and strokes as per customer specifications are available on request, within very short time-frames.