

Thrust - Traction in all positions - Capacity of 14 to 320 tonnes

Description

Double-acting cylinders, intended for a wide range of applications, working in push and pull mode up to a pressure of 700 bar in both directions.

Assembly can be facilitated by cylinder head threading, allowing fitting of various types of equipment (presses, punching machines, frames, etc.).



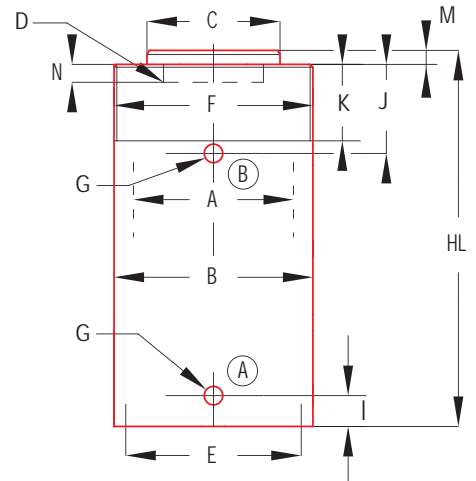
Specifications

- Capacity 14 to 320 tonnes
- Stroke 75 to 440 mm
- Hydraulic piston return
- Anti-seizing, corrosion-proof treatment
- Guide and full load stop ring with wiper seal
- Threaded and detachable thrust head made of treated steel
- Safety valve on reverse mode to prevent any accidental pressure surge
- Inverted screw-on 1/2 couplers 3000-3, for keying purposes

On request

- Different thrusts and strokes
- Rear-threaded clamping holes
- Threaded cylinder neck
- Tilting piston head

(A) : Forward mode Connector
 (B) : Reverse mode Connector



| Cat Tonnes | Forces KN | Pull | Push cross-section cm ² | Pull | Stroke mm | Oil volume dm ³ | P/N | Mass kg | Dimensions in mm | | | | | | | | | | | | |
|------------|-----------|------|------------------------------------|-------|-----------|----------------------------|--------------|---------|------------------|-----|-----|-----|---------|-------------------------|---------|---------|----|-----|----|----|----|
| | | | | | | | | | HL | A | B | C | D | E | F | G | I | J | K | M | N |
| 14 | 137 | 49 | 19,63 | 7,07 | 75 | 0,147 | DE.14.75.L | 9 | 235 | 50 | 83 | 40 | M20 X2 | 4XM8 depth 10 on Ø 55 | M83 X2 | 3/8 NPT | 25 | 65 | 30 | 15 | 30 |
| | | | | | 150 | 0,295 | DE.14.150.L | 11,8 | 310 | | | | | | | | | | | | |
| | | | | | 260 | 0,51 | DE.14.260.L | 15,9 | 450 | | | | | | | | | | | | |
| 30 | 309 | 77 | 44,18 | 11 | 75 | 0,331 | DE.30.75.L | 17,1 | 240 | 75 | 113 | 65 | M34 X2 | 4XM10 depth 10 on Ø 95 | M113 X2 | 3/8 NPT | 25 | 65 | 30 | 15 | 35 |
| | | | | | 150 | 0,663 | DE.30.150.L | 22,3 | 315 | | | | | | | | | | | | |
| | | | | | 250 | 1,105 | DE.30.250.L | 29,2 | 415 | | | | | | | | | | | | |
| | | | | | 325 | 1,436 | DE.30.325.L | 34,3 | 490 | | | | | | | | | | | | |
| 50 | 496 | 144 | 70,88 | 20,62 | 75 | 0,532 | DE.50.75.L | 27 | 250 | 95 | 138 | 80 | M44 X2 | 4XM10 depth 15 on Ø 115 | M138 X3 | 3/8 NPT | 30 | 70 | 40 | 15 | 40 |
| | | | | | 150 | 1,063 | DE.50.150.L | 34,6 | 325 | | | | | | | | | | | | |
| | | | | | 250 | 1,772 | DE.50.250.L | 45,3 | 425 | | | | | | | | | | | | |
| | | | | | 370 | 2,623 | DE.50.370.L | 56,8 | 545 | | | | | | | | | | | | |
| 75 | 727 | 177 | 103,9 | 25,36 | 150 | 1,56 | DE.75.150.L | 53,6 | 335 | 115 | 168 | 100 | M50 X2 | 4XM12 depth 20 on Ø 130 | M168 X3 | 3/8 NPT | 35 | 75 | 40 | 15 | 40 |
| | | | | | 250 | 2,6 | DE.75.250.L | 69 | 435 | | | | | | | | | | | | |
| | | | | | 415 | 4,312 | DE.75.415.L | 94,5 | 600 | | | | | | | | | | | | |
| 100 | 1001 | 274 | 143,1 | 48,1 | 150 | 2,147 | DE.100.150.L | 72,7 | 353 | 135 | 192 | 110 | M55 X2 | 4XM14 depth 20 on Ø 170 | M192 X3 | 3/8 NPT | 35 | 80 | 45 | 18 | 50 |
| | | | | | 250 | 3,578 | DE.100.250.L | 92,4 | 453 | | | | | | | | | | | | |
| | | | | | 400 | 5,724 | DE.100.400.L | 121,8 | 603 | | | | | | | | | | | | |
| 150 | 1496 | 494 | 213,8 | 70,7 | 150 | 3,207 | DE.150.150.L | 98,2 | 365 | 165 | 222 | 135 | M74 X2 | 4XM16 depth 18 on Ø 190 | M222 X4 | 3/8 NPT | 35 | 90 | 55 | 20 | 55 |
| | | | | | 250 | 5,945 | DE.150.250.L | 123 | 465 | | | | | | | | | | | | |
| | | | | | 440 | 9,407 | DE.150.440.L | 170 | 655 | | | | | | | | | | | | |
| 220 | 2199 | 791 | 314,2 | 113,1 | 150 | 4,713 | DE.220.150.L | 155 | 395 | 200 | 268 | 160 | M84 X2 | 4XM16 depth 28 on Ø 220 | M268 X4 | 3/8 NPT | 45 | 100 | 65 | 20 | 65 |
| | | | | | 250 | 7,855 | DE.220.250.L | 190 | 495 | | | | | | | | | | | | |
| | | | | | 420 | 13,196 | DE.220.420.L | 250 | 665 | | | | | | | | | | | | |
| 320 | 3166 | 967 | 452,4 | 138,2 | 150 | 6,786 | DE.320.150.L | 155 | 415 | 240 | 324 | 200 | M112 X3 | 4XM16 depth 28 on Ø 270 | M328 X4 | 3/8 NPT | 50 | 110 | 80 | 25 | 70 |
| | | | | | 250 | 11,31 | DE.320.250.L | 294 | 515 | | | | | | | | | | | | |
| | | | | | 375 | 17 | DE.320.375.L | 362 | 640 | | | | | | | | | | | | |