



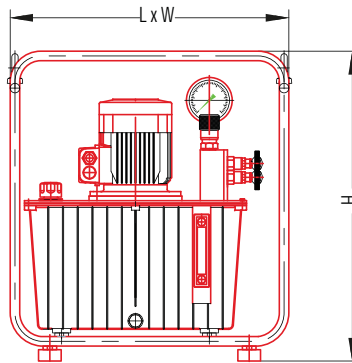
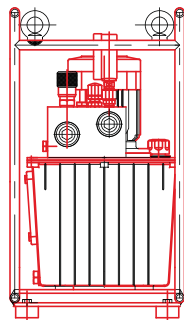
EHP.15.F.20.2000 with magneto-thermal switch and tubular frame

Specifications

- 1.1 kW three-phase 230/380 V – 50Hz electric motor
- Pressure of 2000 bar in continuous operation
- Automatic dual-flow rate pumps:
 - 5.4L/min in approach mode up to 100 bar
 - 0.4L/min in operation up to 700 bar
- Effective tank capacity 20 litres
- Factory-calibrated safety pressure limiter
- Easy-adjustment, fine interval pressure limiter
- Pressure gauge
- ½ BSP outlet oil connector (sealing on cone)

On request

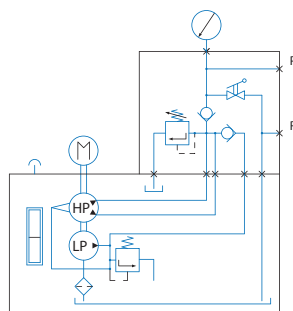
- 1.5kW – 230V – 50Hz single-phase electric motor
- Quick couplers with protective caps
- Tanks of different effective capacities
- Specific distribution
- Magneto-thermal switch
- Tubular protective chassis



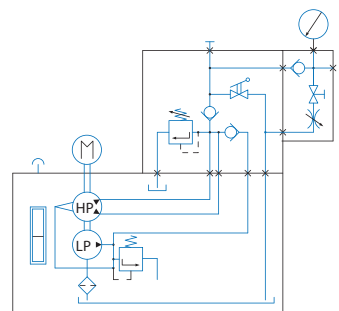
Versions*

- EHP.15.U : Single-acting cylinder control, with no load holding
- EHP.15.F : Single-acting cylinder control with load holding and braking valve

EHP.15.U



EHP.15.F



Type	Power in kW	Working pressure in bar	Flow rates l/min		Oil capacity in litres	Size (dimensions in mm)			Mass in Kg
			Approach (100 b)	Working		Length	Width	Height	
EHP.15.*.20.2000	1,1	2000	5,4	0,8	20	615	385	684	80