

BHR.2.700 with a D100 pressure gauge on orientable elbowed coupling

BHR.2.700 on stabilising base with a D63 pressure gauge on orientable elbowed coupling

### Description

Designed for the supply of double-acting cylinders, the hand pumps in the BHR range are equipped with automatic dual-flow rate injection pumps enabling instantaneous transition from the fast approach speed to the working speed.

Each pump has a 4/3 indexed manual control valve, an adjustable internal pressure limiter, and a connector for a pressure gauge.

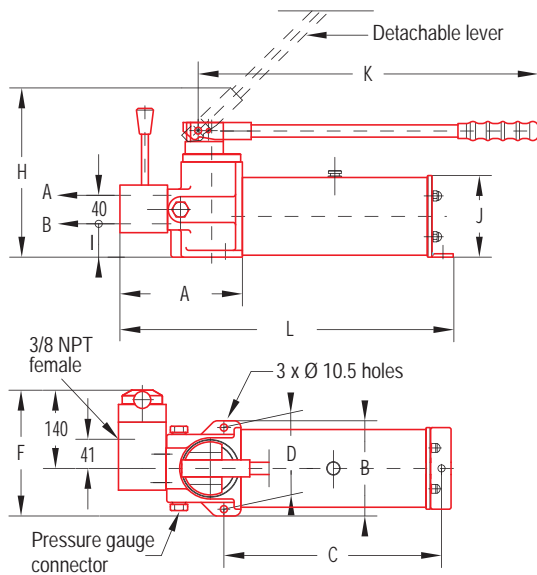
### Specifications

- Working pressure 700 to 1000 bar
- Effective oil tank capacity 1 to 60 litres
- Single-piece light alloy body
- Automatic dual-flow pump with internal pressure limiter
- 4/3 indexed manual control valve flanged on pump
- Detachable pumping lever, lockable in low position
- Lever high position return spring
- Pressure gauge connector
- Stabilisation lug

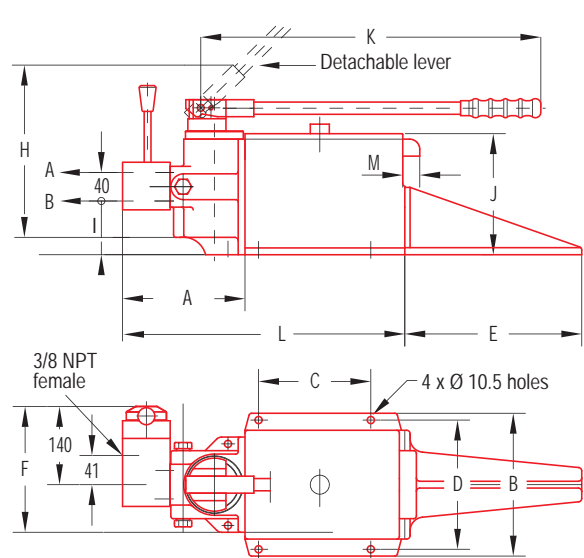
### On request

- Pressure calibration to other values
- Quick couplers with metal protective cap
- Adjustable external pressure limiter
- Distribution unit for supplying multiple cylinders
- Greater capacity
- Pressure gauge
- Foot-operated control
- Use with Skydrol type fluid

### BHR.1 - BHR.2 - BHR.4C - BHR.5C



### BHR.4 to BHR.60



P/N	Mass kg	Eff Cap in litres	Dimensions in mm													Flow rate cm <sup>3</sup> per pump activation			
			A	B	C	D	E	F	H	I	J	K	L	M	700 bar		1000 bar		
															LP	HP	LP	HP	
BHR.1	14,5	1,2	170	130	340	110		185	215	35	95	500	505		21,3	1,85	21,3	1,6	
BHR.2	17	2	180	140	320	120		190	245	50	116	525	490						
BHR.4.C	22	4	180	140	410	120		190	245	50	135	575	580						
BHR.4	23	4	180	210	165	190	250	225	275	80	178	525	410	26					
BHR.5.C	23	5	180	140	505	120		190	250	50	140	575	675						
BHR.8	27	8	180	250	170	230		245	275	80	178	575	520	26					
BHR.15	43	13,7	180	310	300	280		275	275	80	176	575	630						
BHR.20	49	16,6	180	360	300	330		300	275	80	176	575	630						
BHR.25	58	21,6	180	410	350	380		325	275	80	176	575	680						
BHR.30	67	26	180	410	450	380		325	275	80	176	575	780						
BHR.35	71	28,2	180	410	450	380		325	275	80	176	575	830						
BHR.60	130	56,5	180	560	500	530		400	275	80	176	575	1080						