



T.153.U.13.700.C  
with tubular protective  
chassis

### Description

Compact and autonomous, T.153 hydraulic systems are powered by a petrol-fuelled combustion engine. As such, they are perfect for mobile applications, on worksites or in the field. Acceleration synchronised with the system control makes it possible to automatically save fuel and reduce noise pollution. The distribution can be adapted on request.

### Specifications

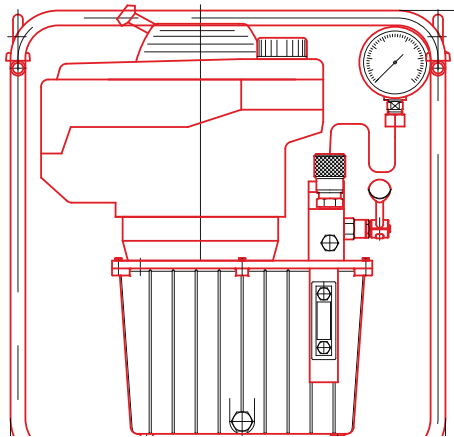
- 4.1 kW petrol-operated 4-stroke combustion engine at 3600 rpm
- Pressure 700 or 1000 bar in continuous operation
- Automatic dual-flow rate pumps:
  - 6 L/min in approach mode up to 100 bar
  - 1.1 L/min in operation up to 700 bar
- Effective tank capacity 13, 22, 50 litres
- Adjustable external pressure limiter
- Pressure gauge
- 3/8 NPT power supply

### On request

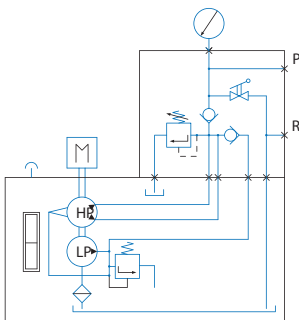
- Quick couplers with protective caps
- Protective chassis for systems with capacity of 13 and 22 litres
- Specific distribution
- Trigger-activated pressure limiter.

### Versions\*

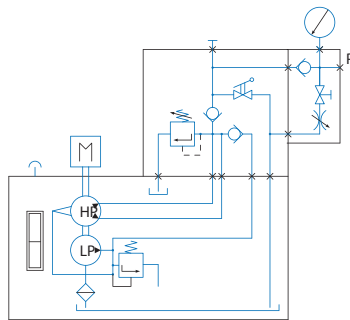
- T.153.U : Single-acting cylinder control, with no load holding
- T.153.F : Single-acting cylinder control with load holding, and braking valve
- T.153.D : Double-acting cylinder control with integrated indexed manual control valve



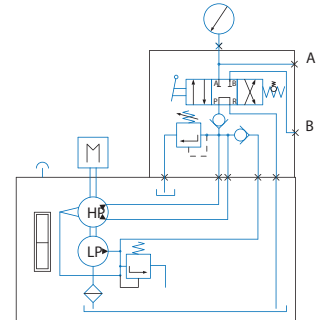
T.153.U



T.153.F



T.153.D



Type	Power in kW	Working pressure in bar	Flow rates l/min		Oil capacity in litres	Size (dimensions in mm)			Mass in Kg
			Approach (100 b)	Working		Length	Width	Height	
T.153.*.13.700	4,1	700	6	1,1	13	615	360	633	51
T.153.*.22.700	4,1	700	6	1,1	22	615	385	733	64
T.153.*.50.700	4,1	700	6	1,1	50	650	550	855	122