

Two automatic flow rates - Working pressure 700 bar



THB.51.F.50.700 with 4 separable outputs (4DI unit)

**Description**

Easy-to-handle and high-powered, THB.51 hydraulic systems are powered by a petrol-fuelled combustion engine. As such, they are perfect for mobile applications, on worksites or in the field, for the supply of high-capacity cylinders or tools requiring a substantial flow rate. Acceleration synchronised with the system control makes it possible to automatically save fuel and reduce noise pollution. The distribution can be adapted on request.

**Specifications**

- 5.1 kW petrol-operated 4-stroke combustion engine at 1800 rpm
- Pressure 700 bar in continuous operation
- Automatic dual-flow rate pumps:
  - 9 L/min in approach mode up to 100 bar
  - 2.5 L/min in operation up to 700 bar
- Effective tank capacity 22, 30, 50 litres
- Adjustable external pressure limiter
- Synchronised acceleration
- "Wheelbarrow" type tubular handling chassis on wheels
- Pressure gauge
- 3/8 NPT power supply

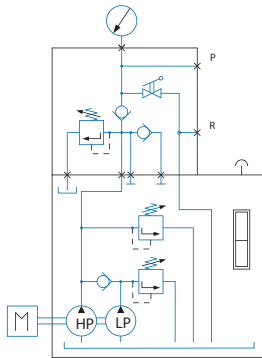
**On request**

- Quick couplers with attached protective caps
- Higher capacity systems
- Quick couplers with protective caps
- Specific distribution
- Trigger-activated pressure limiter.

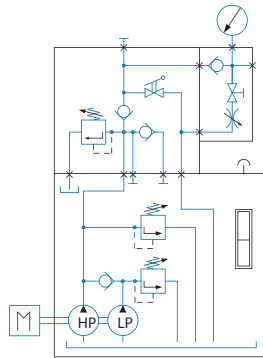
**Versions\***

- THB.51.U : Single-acting cylinder control with no load holding
- THB.51.F : Single-acting cylinder control with load holding, and braking valve
- THB.51.D : Double-acting cylinder control with integrated indexed manual control valve

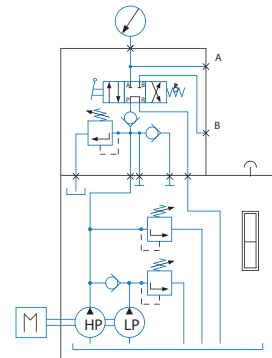
THB.51.U



THB.51.F



THB.51.D



Type	Power in kW	Working pressure in bar	Flow rates l/min		Oil capacity in litres	Size (dimensions in mm)			Mass in Kg
			Approach (100 b)	Working		Length	Width	Height	
THB.51.*.22.700	5,1	700	9	2,5	22	940	620	770	118
THB.51.*.30.700	5,1	700	9	2,5	30	940	620	770	126
THB.51.*.50.700	5,1	700	9	2,5	50	940	765	980	164