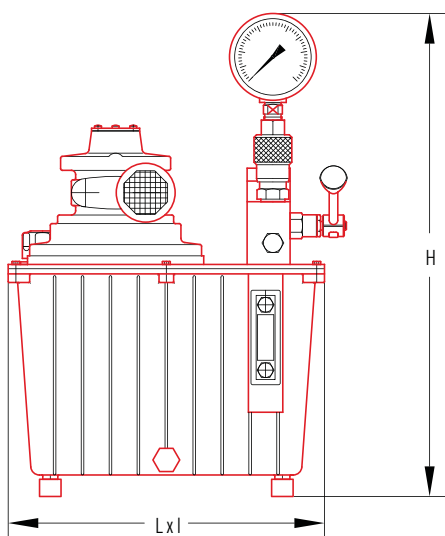


Two automatic flow rates - Working pressure 700 bar



PN.153.D.13.700



Description

Compact, lightweight and easy-to-handle, PN.153 hydraulic systems are powered by a pneumatic motor. They are particularly well-suited to environments in which electric motors and combustion engines are not authorised.

Specifications

- 3 kW pneumatic motor
- Compressed air supply:
 - Air flow rate at max power 2120 l/min
 - Air pressure 7 bar
- Hydraulic pressure 700 bar in continuous operation
- Automatic dual-flow rate pumps:
 - 5 L/min in approach mode up to 100 bar
 - 0.45 L/min in operation up to 700 bar
- Effective tank capacity 13, 22, 50 litres
- Adjustable external pressure limiter
- Pressure gauge
- 3/8 NPT outlet oil connector

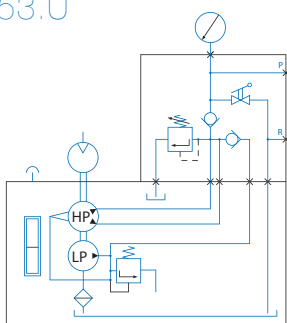
On request

- Lubricating regulating filter on air intake
- Quick couplers with protective caps
- Tanks of different effective capacities
- Pneumatic distribution
- Tubular protective chassis

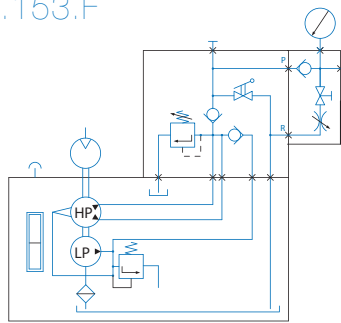
Versions*

- PN.153.U : Single-acting cylinder control, with no load holding
- PN.153.F : Single-acting cylinder control with load holding, and braking valve
- PN.153.D : Double-acting cylinder control with integrated indexed manual control valve

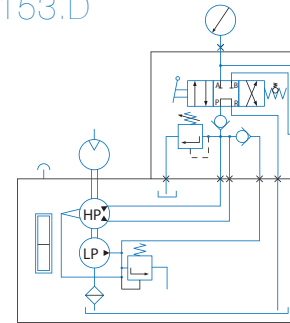
PN.153.U



PN.153.F



PN.153.D



Type	Power in kW	Working pressure in bar	Flow rates l/min		Oil capacity in litres	Size (dimensions in mm)			Mass in Kg
			Approach (100 b)	Working		Length	Width	Height	
PN.153.*.13.700	3	700	5	0,45	13	395	295	562	42
PN.153.*.22.700	3	700	5	0,45	22	490	340	625	55
PN.153.*.50.700	3	700	5	0,45	50	520	465	720	113