



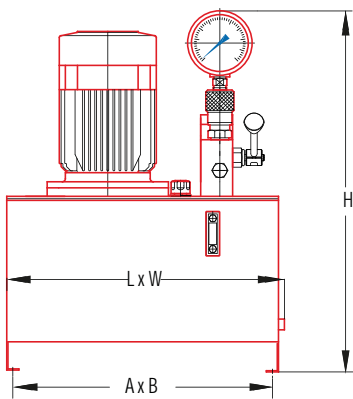
EB.75.D.50.700
with braking valve
and 4 separable outputs

Specifications

- 7.5 kW three-phase 220/380V 50 Hz electric motor
- Pressure of 700 bar in continuous operation
- Automatic dual-flow rate pumps:
 - 14L/min in approach mode up to 100 bar
 - 4.5L/min in operation up to 700 bar
- Effective oil capacity 30 to 100 litres
- Adjustable external pressure limiter
- Pressure gauge
- 3/8 NPT outlet oil connector

On request

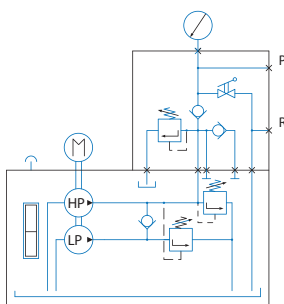
- Quick couplers with protective caps
- Tanks of different effective capacities
- Specific distribution
- Offset distribution
- Magneto-thermal switch
- Electric cabinet and suspended button-operated unit



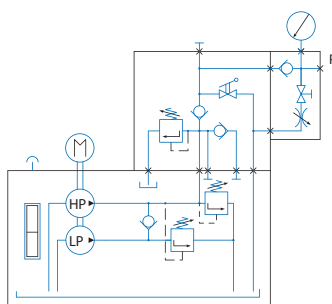
Versions*

- EB.75.U : Single-acting cylinder control, with no load holding
- EB.75.F : Single-acting cylinder control with load holding and braking valve
- EB.75.D : Double-acting cylinder control with integrated indexed manual control valve
- EB.75.SE : Single-acting cylinder control with electro-control valves and suspended button-operated unit
- EB.75.DE : Double-acting cylinder control with electro-control valves and suspended button-operated unit

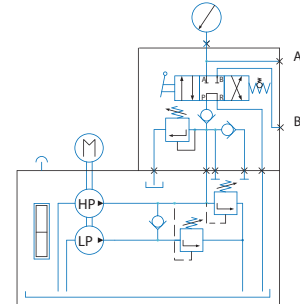
EB.75.U



EB.75.F



EB.75.D



Type	Power in kW	Working pressure in bar	Flow rates l/min		Oil capacity in litres	Size (dimensions in mm)			A X B	Mass in Kg
			Approach (100 b)	Working		Length	Width	Height		
EB.75.*.50.700	7,5	700	14	4,5	50	525	465	810	470 X 425	158
EB.30.*.100.700	7,5	700	14	4,5	100	625	510	960	560 X 480	221
EB.30.*.200.700	7,5	700	14	4,5	200	805	600	960	750 X 560	325