



PN.9.U.8.4000

Description

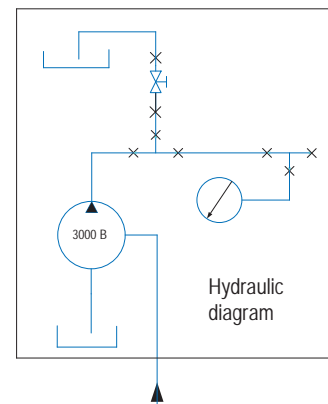
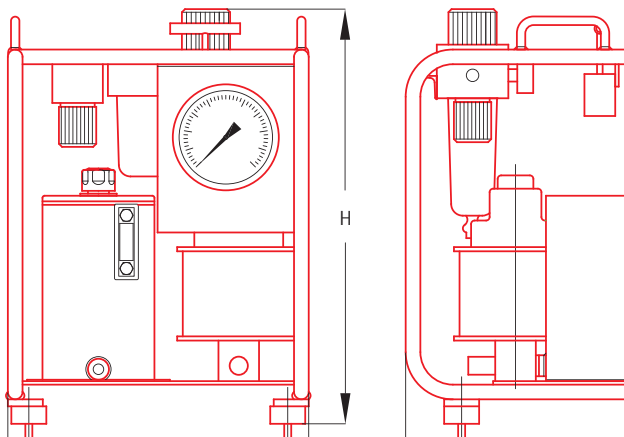
Compact and lightweight, the hydropneumatic systems in the PN.9 range operate based on an air-oil pressure multiplier. Equipped with a lubricating regulating filter, they can be connected directly to a compressed air system. As they are suitable for very high working pressures, these systems are widely used for oil injection during coupling assembly and disassembly.

Specifications

- Air-oil pressure multiplier
- Working pressures 1500 to 4000 B
- Optimum air flow rate: 780 l/min (for Pair 7 B)
- Oil flow rate at 4000 bar: 0.19 l/min (for P air 7 B)
- Lubricating regulating filter on air intake
- Adjustable external air pressure limiter
- Effective tank capacity 8 litres
- Pressure gauge
- Tubular protective and handling chassis

On request

- Greater capacity
- Output variant based on customer request



Type	Working pressure in bar	Flow rates l/min		Oil capacity in litres	Size (dimensions in mm)			A X B	Mass in Kg
		No-load	Working		Length	Width	Height		
PN.9.U.8 . 1500	1500	0,45	0,25	8	450	430	585	370 X 290	40
PN.9.U.8 . 2500	2500	0,4	0,1	8	450	430	585	370 X 290	40
PN.9.U.8 . 4000	4000	0,5	0,1	8	450	430	585	370 X 290	40