

Single-acting - Capacity of 246 to 3783 kN



Description

Compact and sturdy, the tensioners in the STG range are available to provide extensile fastening for most standard bolt assemblies.

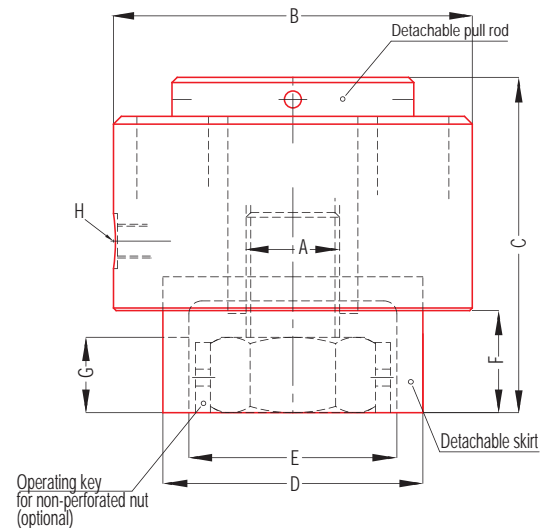
The 1500 bar working pressure makes it possible to obtain very high tensile strengths in restricted overall dimensions. A slot is machined in the bearing skirt to adjust the definitive fastening nut.

Specifications

- Thrust 246 to 3783 kN
- Working pressure 1500 bar
- Stroke 10 to 15mm
- Piston load return
- Interchangeable detachable gripping pull rod

On request

- Different threadings
- Hex nut adjustment wrench



Size	Force kN	Cross-section cm ²	Stroke mm	P/N	Mass kg	Stud size	Dimensions in mm						Oil intake
							A	B	C	D	E	F	
T0	246	16,42	10	STG.T0.M20	3,5	M20	88	115	61	42,6	28	15	1/4 BSP
	246	164,2	10	STG.T0.M22	3,4	M22	88	117	61	44,9	30	16	1/4 BSP
T1	246	16,42	10	STG.T1.M24	3,9	M24	88	118	75	49,6	31	17	1/4 BSP
	246	16,42	10	STG.T1.M27	3,7	M27	88	121	75	55,2	34	18,5	1/4 BSP
T2	430	28,65	10	STG.T2.M30	6,2	M30	106	134	89	61,1	40	22	1/4 BSP
	430	28,65	10	STG.T2.M33	6	M33	106	136	89	65,8	42	23,5	1/4 BSP
	430	28,65	10	STG.T2.M36	5,7	M36	106	139	89	71,6	45	25	1/4 BSP
T3	581	38,7	10	STG.T3.M39	7,8	M39	120	145	103,5	77,3	48	26,5	1/4 BSP
	581	38,7	10	STG.T3.M42	7,4	M42	120	145	103,5	83	51	28	1/4 BSP
T4	916	61,07	10	STG.T4.M45	12,7	M45	144	158	124,5	90,9	55	30,5	1/4 BSP
	916	61,07	10	STG.T4.M48	12,3	M48	144	161	124,5	96,7	58	32	1/4 BSP
	916	61,07	10	STG.T4.M52	11,8	M52	144	165	124,5	102,4	62	34	1/4 BSP
T5	1420	94,65	12	STG.T5.M56	18,9	M56	174	169	145	108,2	65	37	1/4 BSP
	1420	94,65	12	STG.T5.M60	18,2	M60	174	173	145	115	69	39	1/4 BSP
T6	1784	118,96	12	STG.T6.M64	25,5	M64	194	182	164	120	73	41	1/4 BSP
	1784	118,96	12	STG.T6.M68	24,7	M68	194	186	164	126	77	43	1/4 BSP
	1784	118,96	12	STG.T6.M72	24	M72	194	190	164	131	81	45	1/4 BSP
T7	2556	170,43	12	STG.T7.M76	40	M76	235	206	189	137	86	47	1/4 BSP
	2556	170,43	12	STG.T7.M80	39	M80	235	210	189	143	90	49	1/4 BSP
	2556	170,43	12	STG.T7.M85	38	M85	235	215	189	148	95	51,5	1/4 BSP
T8	3783	252,18	15	STG.T8.M90	60,4	M90	274	222	228	160	100	56	1/4 BSP
	3783	252,18	15	STG.T8.M95	59,3	M95	274	227	228	166	105	58,5	1/4 BSP
	3783	252,18	15	STG.T8.M100	56,9	M100	274	232	228	177	110	61	1/4 BSP