



### Description

Sturdy, reliable, easy-to-handle and autonomous, MOKLOS MPI steel pumps are ideal for mobile uses, in workshops or on worksites.

The broad power and stroke range makes them suitable for many needs.

The braking valve makes it possible to control the load on descent.

Their hydraulic pump with two automatic flow rates enables speedy contact with the load and a reasonable force on the lever in the pressure rise phase. The parts are adjusted to the nearest micron and tightness is guaranteed with an oil film, with no seal, enhancing durability further.

In the S version, the threaded piston is equipped with a safety nut enabling mechanical securing of the load in position.

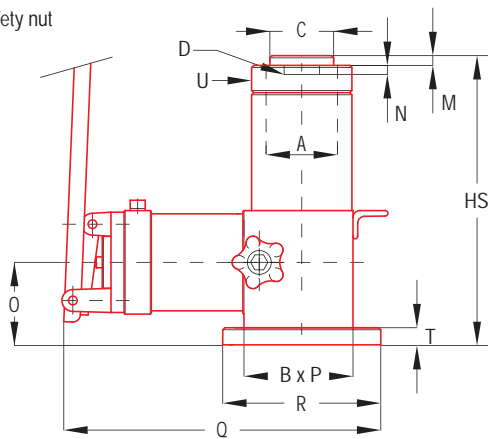
### Specifications

- Thrust 5 to 300 tonnes
- Stroke 40 to 350 mm
- Load return
- Smooth or threaded piston with safety nut (S version)
- Guide and stop ring
- Flat detachable piston head
- Built-in pump with automatic dual flow rate with integrated pressure limiter
- Pumping lever with 360° range
- Pressure gauge connector

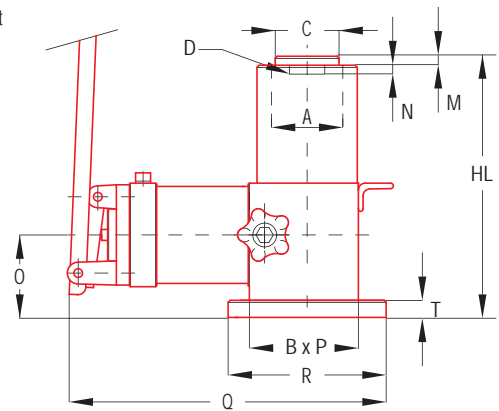
### On request

- Piston return using built-in spring
- Tilting head

With safety nut



Without safety nut



Cat Tonnes	Forces KN	Cross-section cm <sup>2</sup>	Stroke mm	Oil volume dm <sup>3</sup>	P/N		Mass Kg		Dimensions in mm											Piston adv in mm per lever activation								
					Without nut	With nut	L	S	HL	HS	A	B X P	C	D	M	N	O	Q	R	T	U	no-load	laden					
					5	49	9,62	40	0,04	MPI.5.40.L	MPI.5.40.S	8	8,2	100	111	35	70 X 80	35		2	58	240						
20	196	25,5	350	0,9	MPI.20.350.L	MPI.20.350.S	49	50	480	503	60	125 X 140	53	M34X2	10	10	95	399	198	20	90						4,7	0,5
30	294	44,18	350	1,6	MPI.30.350.L	MPI.30.350.S	68	70	486	513	75	135 X 140	70	M44X2	10	10	110	484	248	25	105						2,7	0,3
75	736	86,59	100	0,87	MPI.75.100.L	MPI.75.100.S	49	53	221	264		155 X 150					100	427								1,38	0,15	
			160	1,4	MPI.75.160.L	MPI.75.160.S	57	61	281	324	105	155 X 150	93	M50X2	10	10	100	477	248	25	148				1,38	0,15		
			220	1,91	MPI.75.220.L	MPI.75.220.S	72	76	341	384		155 X 160					120	514							4,5	0,26		
100	981	113,1	100	1,14	MPI.100.100.L	MPI.100.100.S	66	74	228	276							105	482								1,06	0,12	
			160	1,81	MPI.100.160.L	MPI.100.160.S	86	94	288	336	120	175 X 175	107	M55X2	12	10	125	499	258	28	174				3,47	0,2		
			220	2,49	MPI.100.220.L	MPI.100.220.S	98	106	353	401							125	534							3,47	0,2		
200	1962	227	100	2,27	MPI.200.100.L	MPI.200.100.S	124	135	272	315							130	537										
			160	3,64	MPI.200.160.L	MPI.200.160.S	149	160	332	375	170	240 X 240	152	M84X2	15	15	150	547			240				1,73	0,1		
			220	5	MPI.200.220.L	MPI.200.220.S	163	178	402	445							150	597										
300	2943	346,4	100	3,47	MPI.300.100.L	MPI.300.100.S	215	233	295	372							597											
			160	5,55	MPI.300.160.L	MPI.300.160.S	234	271	355	432	210	290 X 290	188	M100X2	20	15	150	672			290				1,13	0,06		
			220	7,62	MPI.300.220.L	MPI.300.220.S	260	298	415	492							150	747										